

# Syndiotactic-specific polymerization of methyl methacrylate with *tert*-butyllithium/trialkylaluminum in dichloromethane

Takafumi Nishiura · Yoshinori Abe ·  
Tatsuki Kitayama

Received: 14 April 2010 / Revised: 1 June 2010 / Accepted: 10 June 2010 /  
Published online: 19 June 2010  
© Springer-Verlag 2010

**Abstract** By using dichloromethane as a polymerization solvent, syndiotactic-specific polymerization of methyl methacrylate with *t*-BuLi in the presence of large excess of tributylaluminum at  $-78\text{ }^{\circ}\text{C}$  proceeded more rapidly than in toluene and gave *st*-PMMA ( $rr = 90\%$ ) with narrow molar mass distribution. This method allows us to prepare *st*-PMMA with molar mass up to  $350 \times 10^3$  in 48 h.

**Keywords** Stereospecific polymerization · Syndiotactic ·  
Poly(methyl methacrylate) (PMMA)

## Introduction

Poly(methyl methacrylate) (PMMA) with high syndiotacticity has attracted interest due to the fact that the glass transition temperature ( $T_g$ ), an important materials property parameter, of PMMA rises with an increase in the syndiotacticity [1]. Intense research efforts have been directed at development of a polymerization system that can lead to the efficient production of highly syndiotactic (*st*-) PMMA [2–10]. Among them, anionic living polymerization of MMA with *tert*-butyllithium (*t*-BuLi) in combination with trialkylaluminum ( $R_3Al$ ) in toluene is one of the earliest examples that proceed in a living manner to afford *st*-PMMA with  $rr$  content of *ca.* 90% [4]. While several coordination polymerization systems utilizing transition metal compounds have been also exploited as exemplified by a latest achievement by Chen et al. [10], which allows them to prepare *st*-PMMA with  $rr$  triad content up to 95% at  $25\text{ }^{\circ}\text{C}$ , *t*-BuLi/ $R_3Al$  is quite versatile since both the initiator components are readily available commercially. In this polymerization

---

T. Nishiura (✉) · Y. Abe · T. Kitayama  
Department of Chemistry, Graduate School of Engineering Science, Osaka University, Toyonaka,  
Osaka 560-8531, Japan  
e-mail: nishiura@chem.es.osaka-u.ac.jp

system, the added aluminum compound is assumed to stabilize the propagating anions so as to prevent possible side reactions, while it activates MMA monomer through coordination to the carbonyl group so as to compensate, to some extent, the lowered reactivity of the stabilized propagating anion. Due to the stabilization effect, the rate of the polymerization is relatively low and thus the preparation of high molar mass PMMA under typical conditions (MMA 10 mmol, toluene 10 mL, *t*-BuLi 0.2 mmol,  $(n\text{-C}_4\text{H}_9)_3\text{Al}$  0.6 mmol, at  $-78\text{ }^\circ\text{C}$ ) requires long polymerization time, i.e. the synthesis of *st*-PMMA with  $5 \times 10^3$  M mass needs 24 h of polymerization time. The rate of polymerization can be enhanced by raising the polymerization temperature but only at the expense of decreased syndiotacticity of the polymer formed. This report provides a practically improved synthetic procedure for the synthesis of *st*-PMMA with the consideration of solvent effect, that allows us to prepare *st*-PMMA (*rr* = 90%) with molar mass up to  $350 \times 10^3$  in 48 h. Halogenated solvents such as dichloromethane or chloroform have scarcely been used as a solvent for anionic polymerization of methacrylates. Only a few studies have been reported using less basic initiators than alkyllithium such as Grignard reagents [11–14] or triphenylphosphine [15]. To the best of the authors' knowledge, this is the first example of polymerization of MMA with alkyllithium initiator using dichloromethane as a solvent, where the presence of  $(n\text{-C}_4\text{H}_9)_3\text{Al}$  effectively suppresses the decomposition of *t*-BuLi through a reaction with dichloromethane.

## Results and discussion

Polymerization of MMA with *t*-BuLi in the presence of 5-fold tributylaluminum ( $(n\text{-C}_4\text{H}_9)_3\text{Al}$ ) was carried out in a series of mixed solvents consisting of toluene and dichloromethane at  $-78\text{ }^\circ\text{C}$  for 24 h. The results are shown in Table 1. In this study,  $(n\text{-C}_4\text{H}_9)_3\text{Al}$  was added first to the solvent containing dichloromethane, the mixture was cooled at  $-78\text{ }^\circ\text{C}$ , and then *t*-BuLi was added to the solution. This addition order is indispensable for the successful polymerization. Under the conditions shown in the table, the polymerization in pure toluene did not reach complete conversion, while that in pure dichloromethane afforded *st*-PMMA in 100% yield. The yield decreased monotonically with increasing toluene content. Though the *rr* content of the obtained polymer slightly decreased when dichloromethane was used, the syndiotacticity of the PMMA is still kept at 90%. The value is high enough for *st*-PMMA to exhibit its specific properties such as gelation in toluene and other aromatic solvents [16, 17].

Time dependence of the polymerization in dichloromethane was also examined as shown in Table 2. The polymerization for 1 h produced *st*-PMMA in 91% yield. First-order plots of the monomer consumption gave an apparent rate coefficient of polymerization of  $3.5 \times 10^{-2}\text{ L mol}^{-1}\text{ s}^{-1}$ , which is almost one order larger than that reported for the polymerization in toluene,  $3.4 \times 10^{-3}\text{ L mol}^{-1}\text{ s}^{-1}$  [4].

To confirm the living nature of the polymerization, the monomer-addition experiment was performed and the SEC traces of the pre-formed and final PMMAs are shown in Fig. 1, which demonstrates clear shift of the SEC peak without any

**Table 1** Polymerization of MMA with *t*-C<sub>4</sub>H<sub>9</sub>Li/(*n*-C<sub>4</sub>H<sub>9</sub>)<sub>3</sub>Al (1/5) in toluene/CH<sub>2</sub>Cl<sub>2</sub> at –78 °C for 2 h

Toluene/CH <sub>2</sub> Cl <sub>2</sub> <sup>a</sup>	Yield (%)	$M_n$			$M_w/M_n^b$	Tacticity (%) <sup>c</sup>			Initiator efficiency <sup>d</sup>
		SEC	NMR	Calcd		<i>mm</i>	<i>mr</i>	<i>rr</i>	
0/10	100	5730	5870	5060	1.06	1	9	90	0.88
1/9	93.8	5710	5100	4750	1.07	0	10	90	0.83
5/5	72.9	5130	4770	3710	1.08	0	9	91	0.72
9/1	66.5	4250	3980	3330	1.08	0	8	92	0.78
10/0	59.3	4100	3680	3030	1.09	0	8	92	0.74

MMA 10 mmol, *t*-C<sub>4</sub>H<sub>9</sub>Li 0.20 mmol, CH<sub>2</sub>Cl<sub>2</sub> 10 mL

<sup>a</sup> Mixed solvent (mL/mL)

<sup>b</sup> Determined by SEC (PMMA standards)

<sup>c</sup> Determined by <sup>1</sup>H NMR

<sup>d</sup> Calculated from the amount of *t*-C<sub>4</sub>H<sub>9</sub>Li used and of the polymer molecule formed which was determined from the polymer yield and the  $M_n$  value

**Table 2** Polymerization of MMA with *t*-C<sub>4</sub>H<sub>9</sub>Li/(*n*-C<sub>4</sub>H<sub>9</sub>)<sub>3</sub>Al (1/5) in CH<sub>2</sub>Cl<sub>2</sub> at –78 °C for different polymerization time

Time (min)	Yield (%)	$M_n$			$M_w/M_n^a$	Tacticity (%) <sup>b</sup>			Initiator efficiency <sup>c</sup>
		SEC	NMR	Calcd		<i>mm</i>	<i>mr</i>	<i>rr</i>	
5	24	1640	1470	1270	1.12	1	9	90	0.77
10	34	2280	2190	1770	1.09	0	10	90	0.78
15	59	3430	3290	3010	1.07	1	9	90	0.88
30	74	4400	4270	3760	1.07	1	9	90	0.85
60	91	5440	5330	4610	1.06	0	10	90	0.85

MMA 10 mmol, *t*-C<sub>4</sub>H<sub>9</sub>Li 0.20 mmol, CH<sub>2</sub>Cl<sub>2</sub> 10 mL

<sup>a</sup> Determined by SEC (PMMA standards)

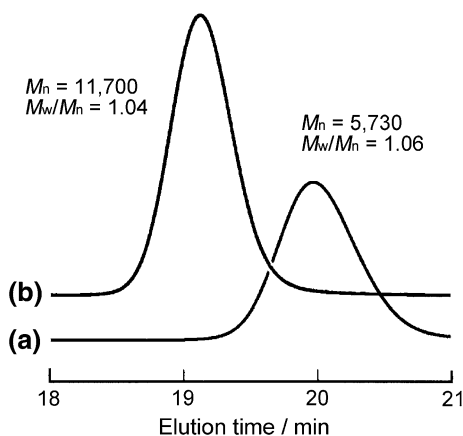
<sup>b</sup> Determined by <sup>1</sup>H NMR

<sup>c</sup> Calculated from the amount of *t*-C<sub>4</sub>H<sub>9</sub>Li used and of the polymer molecule formed which was determined from the polymer yield and the  $M_n$  value

tailoring, confirming the living nature of the polymerization in dichloromethane, through the initiator efficiency is less than unity.

Based on these findings, preparation of high molar mass *st*-PMMA was attempted at varying monomer-to-initiator ratios (Table 3). In order to further enhance the rate of polymerization, the initial monomer concentration was set higher than those in the previous polymerizations (Tables 1, 2); the ratio of MMA and dichloromethane was 1–5 in volume. In all the cases examined, *st*-PMMA with *rr* content of 90% and narrow molar mass distribution were obtained, though the  $M_n$  values are larger than those expected from the initial monomer-to-initiator ratio and the polymer yield. While *st*-PMMA with  $M_n$  of 32 K was obtained quantitatively within 24 h, the polymerizations at the initial monomer-to-initiator ratios of 500 and 2500 did not complete at 24 h. However, extension of the polymerization time to 48 h

**Fig. 1** SEC curves of *st*-PMMA obtained with *t*-C<sub>4</sub>H<sub>9</sub>Li/(*n*-C<sub>4</sub>H<sub>9</sub>)<sub>3</sub>Al (1/5) in CH<sub>2</sub>Cl<sub>2</sub> at –78 °C **a** before and **b** after second monomer addition (eluent THF, flow rate 0.8 mL min<sup>-1</sup>, 40 °C). Polymerization conditions; MMA 10 mmol, *t*-C<sub>4</sub>H<sub>9</sub>Li 0.20 mmol, CH<sub>2</sub>Cl<sub>2</sub> 10 mL, Second portion of MMA; 10 mmol



**Table 3** Polymerization of high molar mass *st*-PMMA with *t*-C<sub>4</sub>H<sub>9</sub>Li/(*n*-C<sub>4</sub>H<sub>9</sub>)<sub>3</sub>Al in CH<sub>2</sub>Cl<sub>2</sub> at –78 °C for 24 h

[M] <sub>0</sub> /[I] <sub>0</sub> <sup>a</sup>	Yield (%)	<i>M<sub>n</sub></i>		<i>M<sub>w</sub></i> / <i>M<sub>n</sub></i> <sup>b</sup>	Tacticity (%) <sup>c</sup>			<i>T<sub>g</sub></i> (°C)
		Obsd <sup>b</sup>	Calcd		<i>mm</i>	<i>mr</i>	<i>rr</i>	
200 <sup>d</sup>	100	32400	20100	1.03	0	10	90	–
500	89	69200	44600	1.03	0	10	90	129.7
2500 <sup>e</sup>	63	270600 <sup>f</sup>	157700	1.03 <sup>f</sup>	1	9	90	131.7
2500 <sup>g</sup>	100	345500 <sup>f</sup>	250400	1.03 <sup>f</sup>	0	10	90	132.4

MMA 50 mmol, CH<sub>2</sub>Cl<sub>2</sub>/[M]<sub>0</sub> = 5/1 (vol/vol)

<sup>a</sup> The initial ratio of monomer to initiator

<sup>b</sup> Determined by SEC (PMMA standards)

<sup>c</sup> Determined by <sup>1</sup>H NMR

<sup>d</sup> MMA 20 mmol

<sup>e</sup> (*n*-C<sub>4</sub>H<sub>9</sub>)<sub>3</sub>Al 1.25 mmol

<sup>f</sup> Due to the existence of higher molar mass fraction over the exclusion limits of SEC in the sample, the *M<sub>n</sub>* and *M<sub>w</sub>*/*M<sub>n</sub>* values are shown as approximate values

<sup>g</sup> (*n*-C<sub>4</sub>H<sub>9</sub>)<sub>3</sub>Al 1.25 mmol, polymerization for 48 h

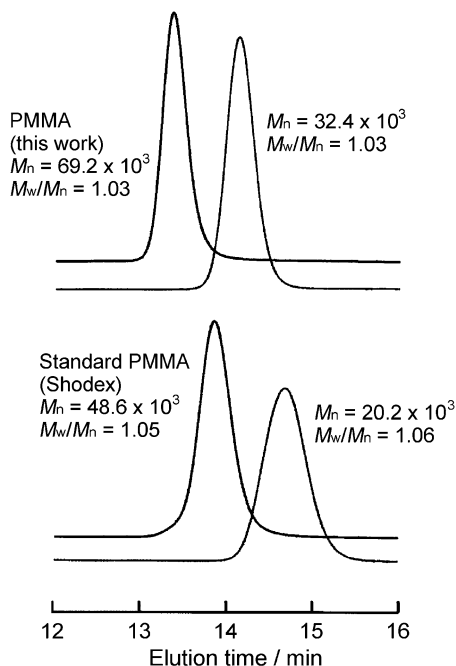
resulted in a quantitative yield and *st*-PMMA with *M<sub>n</sub>* of 345 K was successfully synthesized by the present polymerization system. The narrow molar mass distribution of these *st*-PMMA are well demonstrated by comparing their SEC curves with those of the commercial PMMA standard samples (Fig. 2).

As seen in Table 3, the glass transition temperature (*T<sub>g</sub>*) of the *st*-PMMA increased with increasing molar mass as expected from the well-known equation proposed by Fox and Flory [18];

$$T_g = T_{g\infty} - K/M_n \quad (T_{g\infty} : T_g \text{ for infinite molar mass polymer}).$$

Though the number of sample is limited, the *T<sub>g∞</sub>* for *st*-PMMA with *rr* content of 90% was estimated to be 133.2 °C and the *K* value of  $2.9 \times 10^{-5}$  °C.

**Fig. 2** SEC curves of *st*-PMMA obtained in this work (see Table 3), and those of standard PMMA samples from Shodex (eluent THF, flow rate  $0.8 \text{ mL min}^{-1}$ ,  $40 \text{ }^\circ\text{C}$ )



In conclusion, use of dichloromethane as a solvent for anionic polymerization of MMA with  $t\text{-C}_4\text{H}_9\text{Li}/(n\text{-C}_4\text{H}_9)_3\text{Al}$  effectively enhances the rate of polymerization about ten times in comparison with the originally reported toluene medium probably due to the higher dielectric constant (9.1) than that of toluene (2.4), which facilitates the ionic reaction process, while maintaining high syndiotactic specificity of the polymerization. Thus, the present method provides a facile means to prepare relatively high molar mass *st*-PMMA from practically accessible sources.

## Experimental

### Materials

Dichloromethane (Nacalai Tesque) was distilled under nitrogen, stored over calcium dihydride ( $\text{CaH}_2$ ), and vacuum distilled just before use. Toluene (Aldrich Co. Ltd., anhydrous grade) were mixed with a small amount of butyllithium and distilled under high vacuum just before use. MMA (Nacalai Tesque) was fractionally distilled and stored over  $\text{CaH}_2$ . The monomer was distilled over  $\text{CaH}_2$  under reduced nitrogen pressure just before use.  $t\text{-BuLi}$  in pentane (Aldrich Co. Ltd.) was used as a heptane solution by replacing the solvent under high vacuum. The concentration was determined by titration with butan-2-ol and with *o*-phenanthroline as an indicator [19]. Tributylaluminum [ $(n\text{-C}_4\text{H}_9)_3\text{Al}$ , Kishida Chemical] was used for polymerization as a toluene solution.

## Polymerizations

Polymerizations were carried out in glass ampoules, filled with dried nitrogen passed through Molecular Sieves 4A, cooled at  $-78\text{ }^{\circ}\text{C}$ . In a typical polymerization experiment,  $(n\text{-C}_4\text{H}_9)_3\text{Al}$  in toluene (1.0 mmol) was added to 10 mL of dichloromethane and the mixture was cooled at  $-78\text{ }^{\circ}\text{C}$ . The initiator ( $t\text{-BuLi}$  0.20 mmol) solution was added at the polymerization temperature, and the reaction was initiated by adding MMA (10 mmol) to the initiator solution and terminated by adding a small amount of methanol containing aqueous HCl at the polymerization temperature. The reaction mixture was poured into a large amount of hexane and the precipitate was collected by filtration, washed with hexane, dilute HCl (aq), and hexane, successively, and dried in vacuo at  $40\text{ }^{\circ}\text{C}$ .

## Instruments

$^1\text{H}$  NMR spectra were recorded in chloroform-*d* on a Varian Unity Inova 500 spectrometer. Chemical shifts in  $^1\text{H}$  NMR spectra were referred to the signal due to  $\text{CHCl}_3$  in the solvent (at 7.24 ppm). Molar mass and its distributions of the polymers were determined by size exclusion chromatography (SEC) using a Jasco model GPC-900 chromatograph equipped with two Polymer Laboratories SEC columns [PL-gel, Mixed C (300 mm  $\times$  7.5 mm)], using THF as an eluent at a flow rate of  $0.8\text{ mL min}^{-1}$  and at a column temperature of  $40\text{ }^{\circ}\text{C}$ , and calibrated against standard PMMA samples (Shodex, MW: 1577100, 744900, 174100, 20200, 5700, 1850).  $T_g$  was determined on a SEIKO Instruments EXSTAR 6000 apparatus under nitrogen flow ( $100\text{ mL min}^{-1}$ ) at a heating rate of  $10\text{ }^{\circ}\text{C min}^{-1}$ .

## References

1. Thompson EV (1966) Dependence of the glass transition temperature of poly(methyl methacrylate) on tacticity and molecular weight. *J Polym Sci A* 2 4:199–208. doi:[10.1002/pol.1966.160040204](https://doi.org/10.1002/pol.1966.160040204)
2. Hatada K, Kitayama T, Ute K (1988) Stereoregular polymerization of  $\alpha$ -substituted acrylates. *Prog Polym Sci* 13:189–276. doi:[10.1016/0079-6700\(88\)90004-4](https://doi.org/10.1016/0079-6700(88)90004-4)
3. Hatada K, Nakanishi H, Ute K, Kitayama T (1986) Studie on *p*- and *m*-vinylbenzylmagnesium chlorides as initiators and monomers—preparations of macromers and poly(Grignard reagent)s. *Polym J* 18:581–591. doi:[10.1295/polymj.18.581](https://doi.org/10.1295/polymj.18.581)
4. Kitayama T, Shinozaki T, Masuda E, Yamamoto M, Hatada K (1988) Highly syndiotactic poly(methyl methacrylate) with narrow molecular weight distribution formed by *tert*-butyllithium-trialkylaluminium in toluene. *Polym Bull* 20:505–510. doi:[10.1007/BF00263663](https://doi.org/10.1007/BF00263663)
5. Kitayama T, Shinozaki T, Sakamoto T, Yamamoto M, Hatada K (1989) Living and highly syndiotactic polymerization of methyl methacrylate and other methacrylates by *tert*-butyllithium-trialkylaluminium in toluene. *Makromol Chem Suppl* 15:167–185. doi:[10.1002/macp.1989.020151989116](https://doi.org/10.1002/macp.1989.020151989116)
6. Yasuda H, Yamamoto H, Yokota K, Miyake S, Nakamura A (1992) Synthesis of monodispersed high molecular weight polymers and isolation of an organolanthanide(III) intermediate coordinated by a penultimate poly(MMA) unit. *J Am Chem Soc* 114:4908–4909. doi:[10.1021/ja00038a069](https://doi.org/10.1021/ja00038a069)
7. Kitayama T, Masuda E, Yamaguchi M, Nishiura T, Hatada K (1992) Syndiotactic-specific polymerization of methacrylates by tertiary phosphine-triethylaluminum. *Polym J* 24:817–827. doi:[10.1295/polymj.24.817](https://doi.org/10.1295/polymj.24.817)

8. Knjazhanski SY, Elizalde L, Cadenas G, Bulychev BM (1998) Polymerization of methyl methacrylate with alane complexes of bivalent lanthanidocenes. *J Organomet Chem* 568:33–40. doi:[10.1016/S0022-328X\(98\)00751-7](https://doi.org/10.1016/S0022-328X(98)00751-7)
9. Dove AP, Gibson VC, Marshall EL, White AJP, Williams DJ (2002) A well-defined magnesium enolate initiator for the living and highly syndioselective polymerisation of methylmethacrylate. *Chem Commun* 1208–1209. doi:[10.1039/b201896a](https://doi.org/10.1039/b201896a)
10. Ning Y, Chen EY-X (2008) Metallocene-catalyzed polymerization of methacrylates to highly syndiotactic polymers at high temperatures. *J Am Chem Soc* 130:2463–2465. doi:[10.1021/ja710822g](https://doi.org/10.1021/ja710822g)
11. Okamoto Y, Asakura T, Hatada K (1991) Remarkable influence of tacticity on liquid crystallinity of polymethacrylates with biphenyl moiety as mesogenic group. *Chem Lett* 1105–1108
12. Kitayama T, Fujimoto N, Hatada K (1993) Kinetics and stereoregulation in the isotactic-specific and living polymerization of methyl methacrylates. *Makromol Chem Macromol Symp* 67:137–146
13. Nakano T, Hasegawa T, Okamoto Y (1993) Synthesis and liquid crystallinity of stereoregular polymethacrylates with mesogenic ester groups. *Macromolecules* 26:5494–5502
14. Ishizawa H, Nakano T, Yade T, Tsuji M, Nakagawa O, Yamaguchi T (2004) *J Polym Sci Part A Polym Chem* 42:4656–4665. doi:[10.1002/pola.20360](https://doi.org/10.1002/pola.20360)
15. Hatada K, Kitayama T, Nishiura T, Tawada M, Harazono T, Sugaya T (1997) Synthesis and properties of stereoregular polymethacrylates with azobenzene moiety as a photoreactive side-chain mesogenic group. *J Macromol Sci Pure Appl Chem A34*:1183–1194
16. Ruytinx B, Berghmans H (2001)  $^1\text{H}$  NMR relaxation study of the gelation of syndiotactic poly(methyl methacrylate) in toluene. *Macromolecules* 34:522–528. doi:[10.1021/ma000958e](https://doi.org/10.1021/ma000958e)
17. Berghmans H, Donkers A, Frenay L, Stoks W, De Schryver FE, Moldenaers P, Mewis J (1987) Thermoreversible gelation of syndiotactic poly(methyl methacrylate). *Polymer* 28:97–102. doi:[10.1016/0032-3861\(87\)90322-3](https://doi.org/10.1016/0032-3861(87)90322-3)
18. Fox TG Jr, Flory PJ (1950) Second-order transition temperatures and related properties of polystyrene. I. Influence of molecular weight. *J Appl Phys* 21:581–591. doi:[10.1063/1.1699711](https://doi.org/10.1063/1.1699711)
19. Watson SC, Eastham JF (1967) Colored indicators for simple direct titration of magnesium and lithium reagents. *J Organomet Chem* 9:165–168. doi:[10.1016/S0022-328X\(00\)92418-5](https://doi.org/10.1016/S0022-328X(00)92418-5)